



“  
SIT WELL. FEEL WELL.  
LOOK WELL.  
”

WELL



“  
SIT **WELL**. FEEL **WELL**.  
LOOK **WELL**.  
”

## This is the **WELL COLLECTION**

From a simple visitor chair to fully upholstered boardroom chair – Ahrend’s WELL chair is multi-purpose. A chair that feels at home in the office, waiting room or coffee lounge.

With the wide choice of base frames, colours and upholstery, you can create a WELL chair tailored to your needs and fully adapted to its surroundings. While its appearance can change, its comfort remains constant: every version of the WELL chair is a perfect fit. This is precisely what Ahrend designer Kees de Boer had in mind during the design process. ‘Comfort is the starting point. That’s why I design the shape first, then the outline follows.’

The chair’s secret? The organic shape of its plastic shell; and the relatively high backrest, which bends backwards. You can lean back relaxed, sit upright or sit actively for work. ‘People regularly change their posture,’ says De Boer. ‘That’s also possible with the WELL chair because I made moulds and tested them on different people to determine the correct angles and shape. When everyone can sit in this chair comfortably, then I’m satisfied.’

### **GIO 2017**

During the 2017 Dutch Design Week in Eindhoven, the Ahrend WELL COLLECTION received – together with three other Ahrend products – a Recognition for Good Industrial Design (Erkenning Goed Industrieel Ontwerp). A widely recognised quality mark, granted by an independent jury.

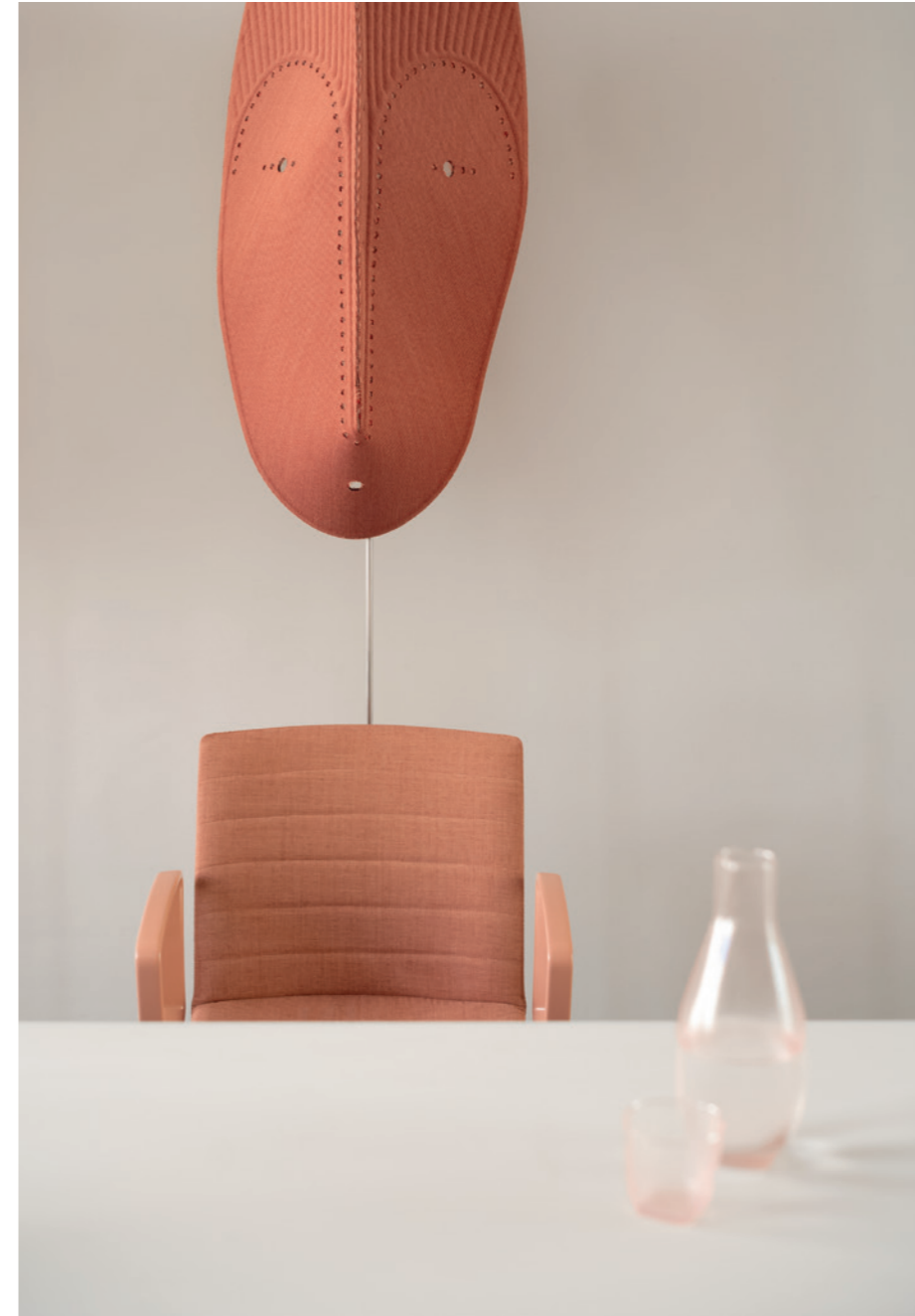
# Great to have you on board

Where plans are proposed and  
powerful decisions are made

“  
SIT DOWN  
AND VISUALISE  
THE FUTURE  
”









**Ahrend WELL CHAIR**  
Trestle base



**Kvadrat UPHOLSTERY**  
Floyd 623



**Colour FRAME**  
58 Antique Pink



**Ahrend WELL CHAIR**  
Trestle base



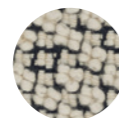
**Kvadrat UPHOLSTERY**  
Melange Nap 221



**Colour FRAME**  
36 Dark Warm Grey



**Ahrend DELTA TABLE**  
Worktop: Soft touch 03GL Blanc Glace  
Frame: 05 Signal White texture



**Kvadrat RUG**  
Cocoon 0130



**Kvadrat CURTAIN**  
Zulu 2 602





# Bring your own chair

The best  
ideas are born  
when everyone  
joins in





“  
MIX  
TO THE  
MAX  
”





“  
A CHAIR  
MADE TO  
MEASURE  
”





**Ahrend WELL CHAIR**  
Four-leg



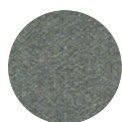
**Kvadrat UPHOLSTERY**  
Fiord 521



**Colour FRAME AND SHELL**  
39 Grey



**Ahrend WELL CHAIR**  
Trestle base on castors



**Kvadrat UPHOLSTERY**  
Melange Nap 951



**Colour FRAME**  
02 Chrome



**Ahrend WELL CHAIR**  
Four-leg



**Kvadrat UPHOLSTERY**  
Remix 2 823



**Colour FRAME AND SHELL**  
91 Baby Blue



**Ahrend WELL CHAIR**  
Trestle base



**Colour FRAME AND SHELL**  
48 Coral Red



**Ahrend WELL CHAIR**  
Cantilever



**Kvadrat UPHOLSTERY**  
Remix 2 433



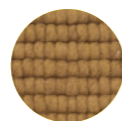
**Colour FRAME AND SHELL**  
63 Golden Yellow



**Ahrend MOVE-IT TABLE**  
Worktop: Ciranol 1219 Black



**Kvadrat CURTAIN**  
Open Weave 0012



**Kvadrat RUG**  
Moss 0012



# The ideal touchdown workspace

Work hard, play hard? This might just  
be the place you're looking for

“  
WORK  
IN  
PROGRESS  
”







**Ahrend WELL CHAIR**  
Five-star base on castors



**Ahrend BALANCE FOUR-LEG TABLE**  
Worktop: Monotop 32 Grey Oak print



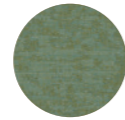
**Kvadrat UPHOLSTERY**  
Memory 2 953



**Ahrend BALANCE FOUR-LEG TABLE**  
Frame: 33 Metallic Chameleon  
Grey texture

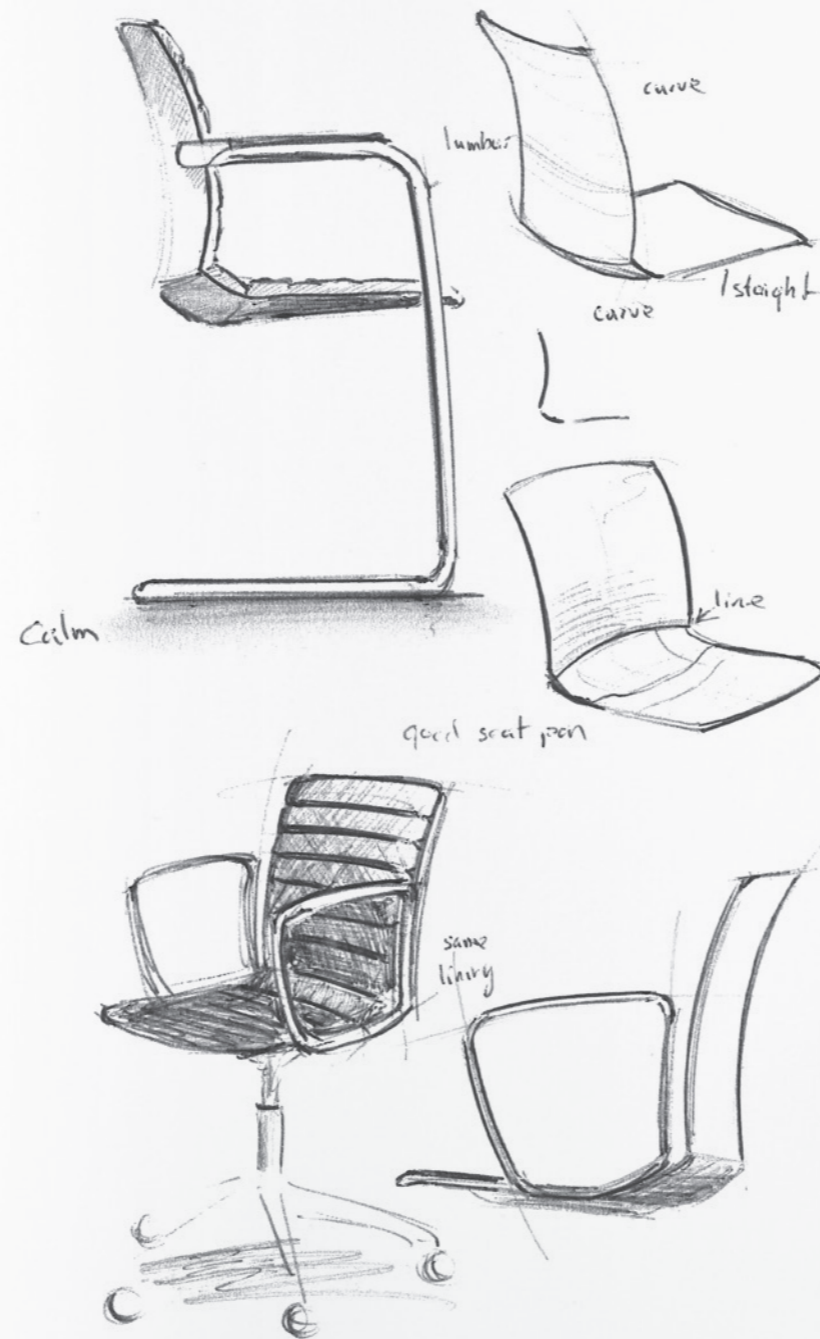
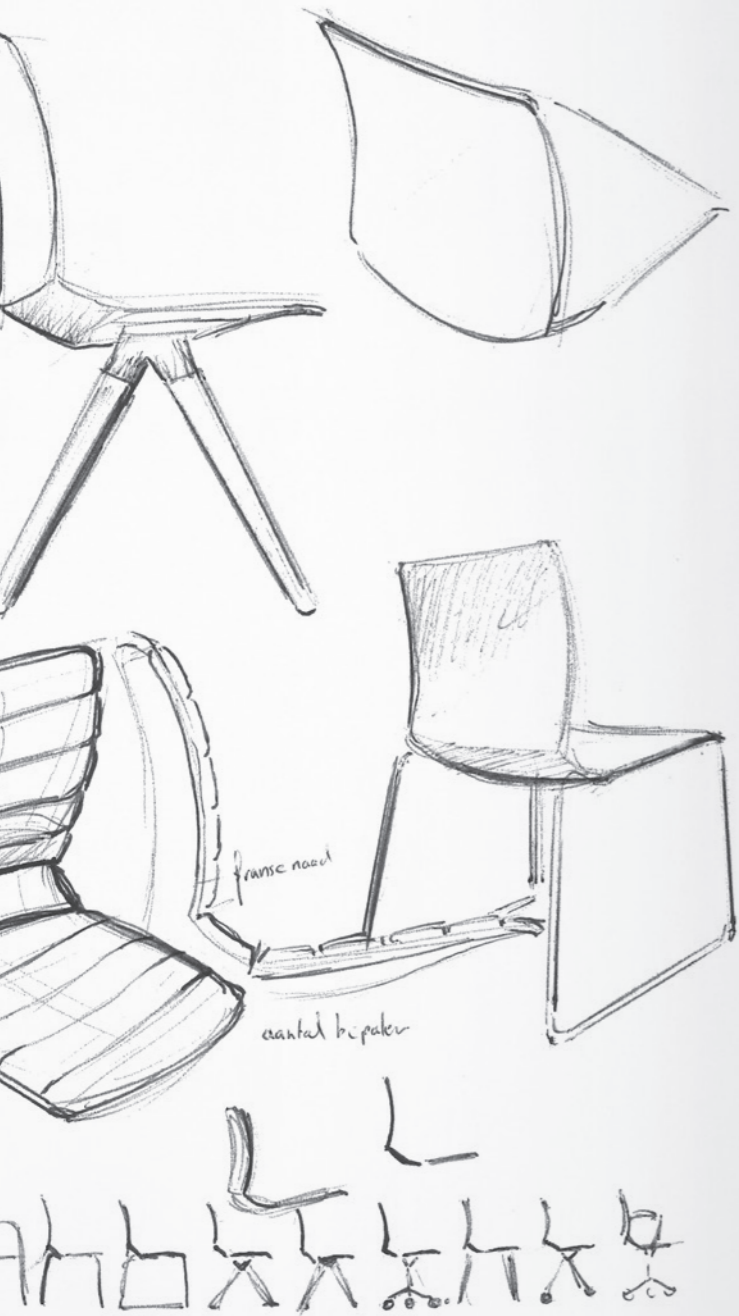


**Colour FRAME**  
76 Grey Green



**Ahrend S25 SCREEN**  
Upholstery: Kvadrat Memory 2 953





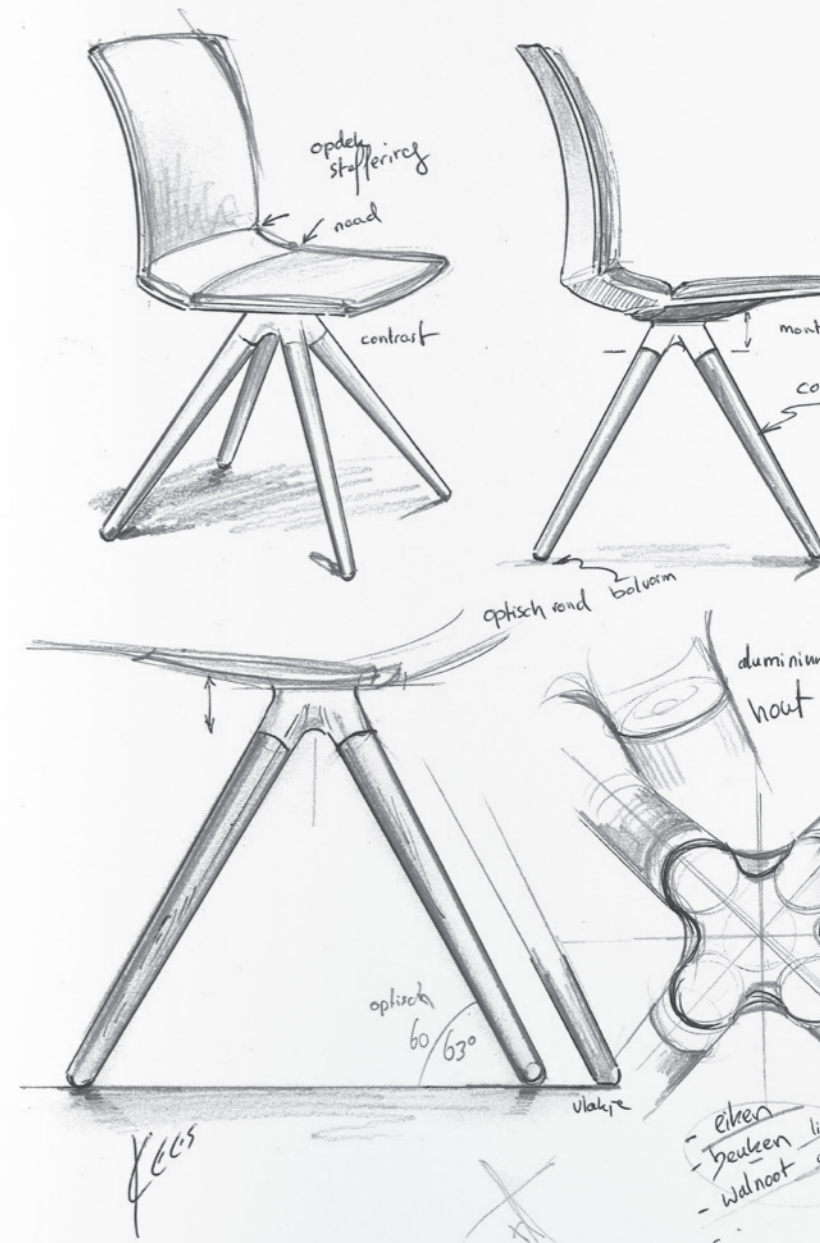
## Designer **KEES DE BOER**

He could draw well, but anyone could do that at home. It wasn't until Kees de Boer (1969) was repeatedly told that he had to 'do something' with his talents that the penny finally dropped. He studied Auto Engineering at technical school, followed by Man & Labour at the Eindhoven Academy of Industrial Design, now Design Academy Eindhoven, and an internship at Paolo Villa Industrial Design in Milan.

'I realised that you never design cars on your own,' says De Boer. 'With furniture, your role as a designer is much greater; you are involved in the design process from start to finish. The versatility of materials also appealed to me. Wood, plastic, textiles, steel ... your choice of material determines the identity of your product.'

De Boer has designed many chairs in his 21 years at Ahrend. For him, the WELL COLLECTION is also special. 'It began as a design for a visitor chair and grew into a series of eight different models.' His personal favourite? The sled base. 'The frame's thinness has a graceful appearance, but it is very sturdy on its feet.'

“  
GRACEFUL  
AND STURDY  
AT THE  
SAME TIME  
”





# Pretty & practical

Waiting rooms call for a chair that's  
about looks as well as comfort



“  
NEXT,  
PLEASE!  
”

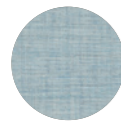




**Ahrend WELL CHAIR**  
Four-leg



**Ahrend WELL CHAIR**  
Four-leg Wood



**Kvadrat UPHOLSTERY**  
Remix 2 823



**Kvadrat UPHOLSTERY**  
Aloy 017



**Colour FRAME AND SHELL**  
91 Baby Blue



**Colour SHELL**  
31 Sand



**Material LEGS**  
54 Beech White wash



**Ahrend WELL CHAIR**  
Trestle base



**Ahrend CROSS TABLE**  
Worktop: Monotop 10 White  
Frame: 10 White



**Colour FRAME AND SHELL**  
91 Baby Blue



**Kvadrat RUG**  
Merger 0111



CAFÉ

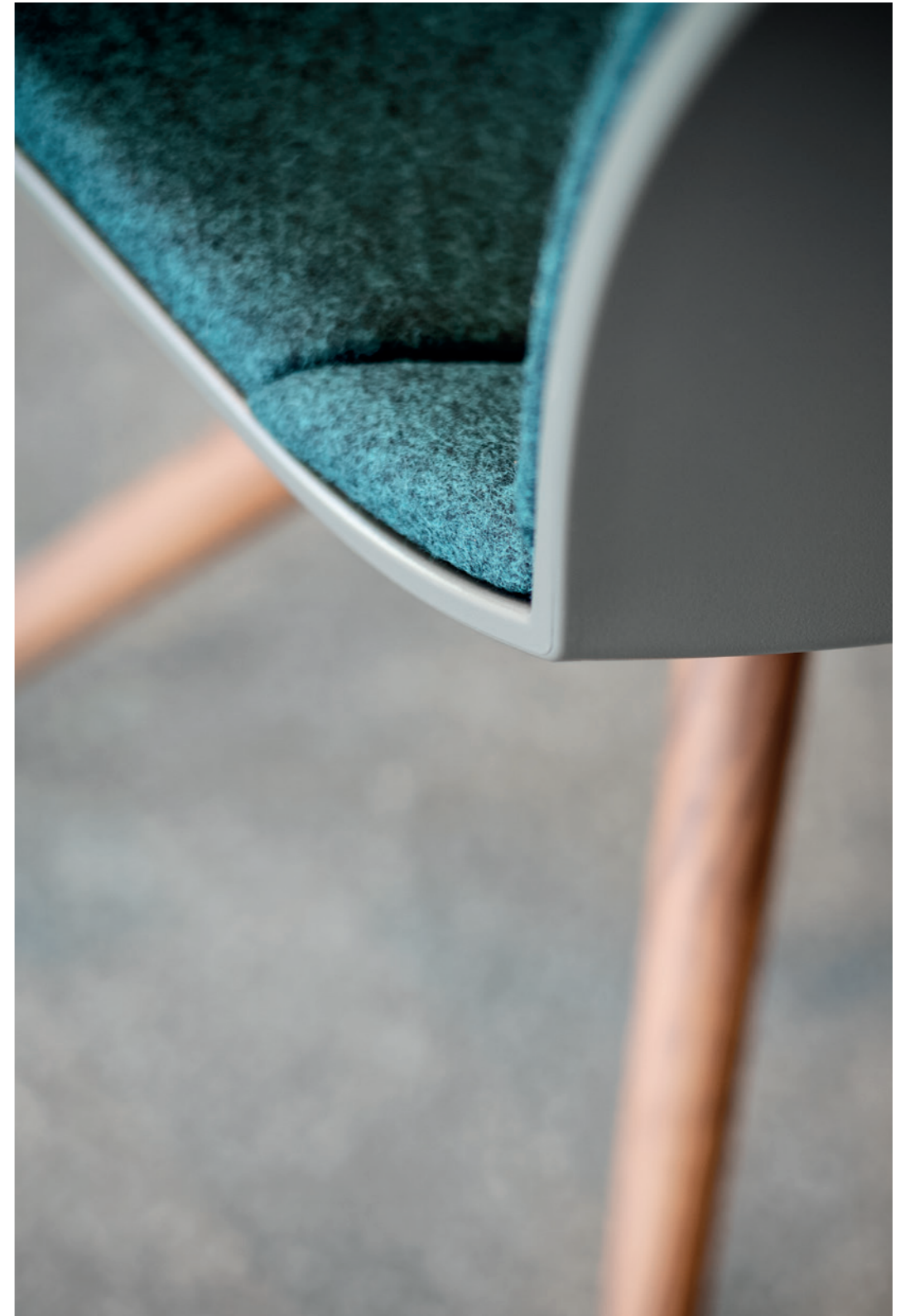


# Rise and shine

Let's make an early start – we have the whole day ahead of us



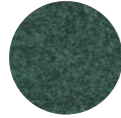
“  
WOULD YOU  
LIKE A CUP  
OF COFFEE?  
”







**Ahrend WELL CHAIR**  
Trestle base Wood



**Kvadrat UPHOLSTERY**  
Divina Melange 2 871



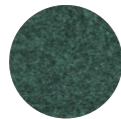
**Colour FRAME**  
36 Dark Warm Grey



**Material LEGS**  
49 Walnut



**Ahrend WELL CHAIR**  
Trestle base Wood



**Kvadrat UPHOLSTERY**  
Divina Melange 2 871



**Colour FRAME AND SHELL**  
36 Dark Warm Grey



**Material LEGS**  
49 Walnut



**Hay for Ahrend PYRAMID CAFÉ 21 TABLE**  
Worktop: Smoked Lacquered Solid Oak



**Hay for Ahrend PYRAMID CAFÉ 21 TABLE**  
Frame: Beige



# Come on in

Feel free to look around  
and make yourself at home

“  
COMFORT  
COMES  
IN MANY  
SHAPES  
”





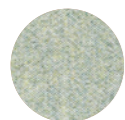




**Ahrend WELL CHAIR**  
Sled base



**Ahrend AERO TABLE**  
Worktop: Monotop 10 White  
Frame: 10 White



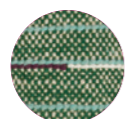
**Kvadrat UPHOLSTERY**  
Melange Nap 911



**Kvadrat CURTAIN**  
Reflector 0014



**Colour FRAME**  
10 White



**Kvadrat RUG**  
Argali 971



“  
ALL'S  
WELL  
THAT ENDS  
WELL  
”

# This is the **WELL COLLECTION**



**Cantilever**

**Sled base**



**Four-leg with armrests**

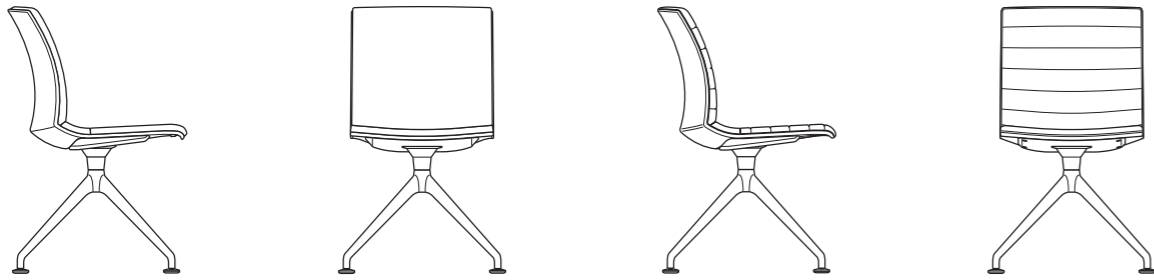
**Four-leg Wood**



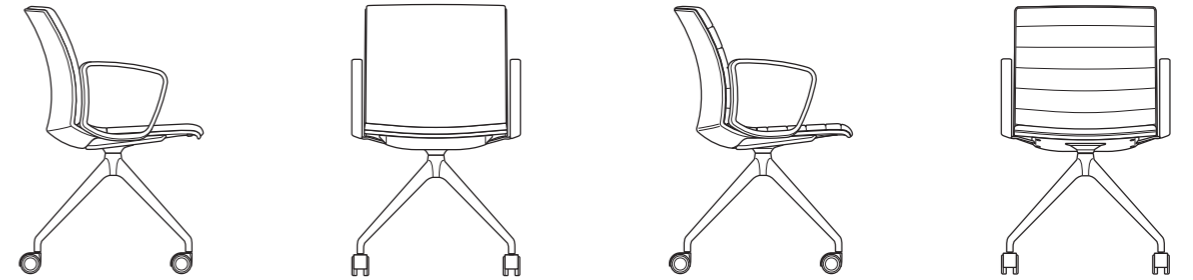
**Four-leg without armrests**

**Trestle base Wood**

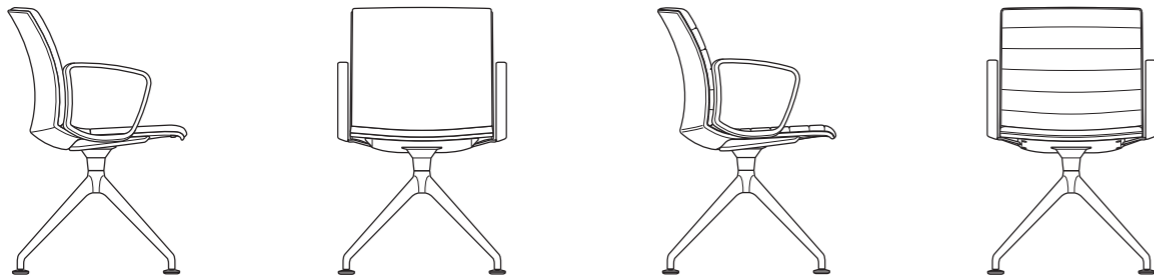
# This is the **WELL COLLECTION**



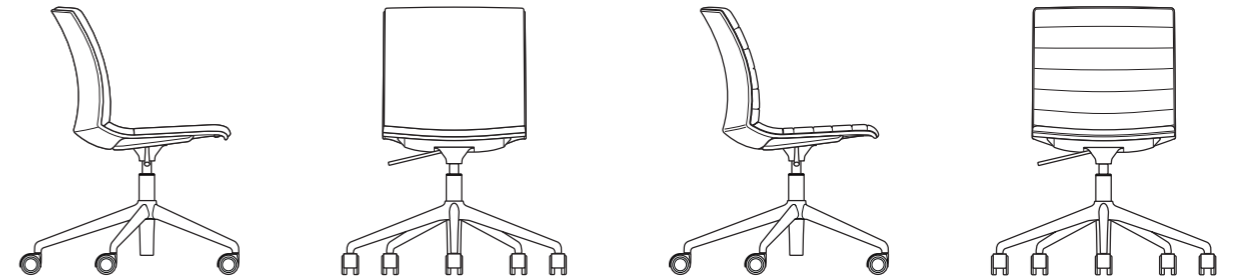
**Trestle base**



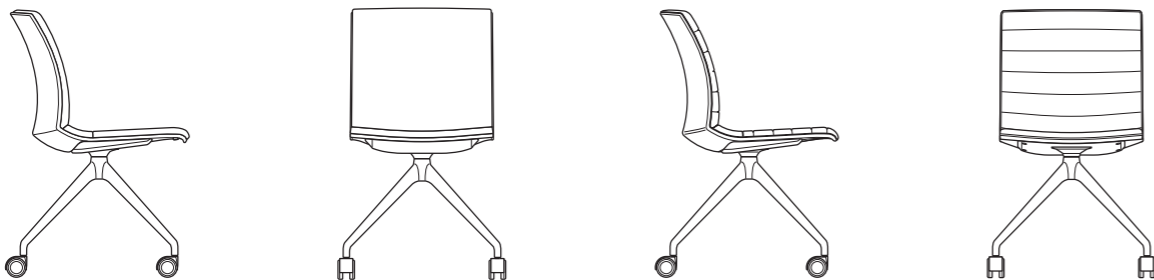
**Trestle base with armrests on castors**



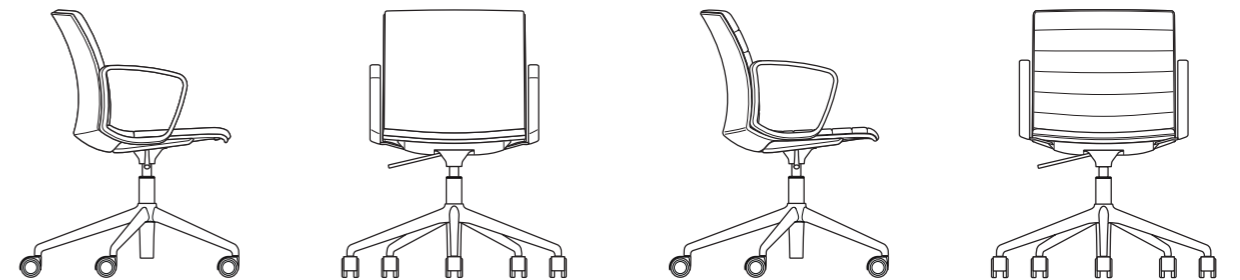
**Trestle base with armrests**



**Five-star base**



**Trestle base on castors**



**Five-star base with armrests**

## COLOPHON

### Art direction and book design

Lucas & Lucas – Marijke Lucas

### Styling & production

Kamer 465 – Anya van de Wetering,  
Marie-Claire Lambalk

### Photography

Arjan Benning

### Assistants

Bente van Wamel  
Jill Ligtenberg  
Berend van Breda

### Post-production and retouche

Polina Gladkova

### Text

Annelies Kooijman

### Proofreading and translation

Jason Coburn

### Published by

Ahrend  
Arnold Struik, Marketing & Innovation Director  
Kees de Boer, Designer  
Lieke van Gool, Concept Designer  
Irina Krupnova, Product Manager  
Arnoud Vlieger, Manager Product Development  
Ab Rozenhart, R&D Workshop Employee  
Jeroen Beun, Product Developer  
Arie van Kuik, Product Developer

Kvadrat BV

### Special thanks to

HAY  
Caffé Dallucci

### Printed by

Gianotten Printed Media

[www.ahrend.com](http://www.ahrend.com)

[www.kvadrat.dk](http://www.kvadrat.dk)

© Ahrend

### All rights reserved

No part of this publication may be reproduced, stored in a retrieval system, or transmitted in any form or by any means, electronic, mechanical, photocopying, recording or otherwise, without the prior written permission of the publisher. It was not possible to find all of the credits, linked to the images that have been used in this publication. Interested parties are being requested to contact Ahrend via [communications@ahrend.com](mailto:communications@ahrend.com).

More information on the WELL COLLECTION  
via [info@ahrend.com](mailto:info@ahrend.com)

## CONTRIBUTORS

### Page 4 – 13

#### Welcome on board

Mask by GamFratesi, Zulu curtain by Giulio Ridolfo, Plot notebook, Cocoon rug by Hella Jongerius (Kvadrat)  
Taraxacum 88 pendant light (Flos)  
Tela Set of 4 glasses, Tela carafe, Kaleido tray L, Kaleido tray XS, Candy pen (HAY)

### Moodboard page 10 - From left to right

Small cup, Serax  
[curtain sample] Zulu 2 602, Kvadrat  
[fabric sample] Floyd 623, Kvadrat  
[fabric sample] Melange nap 651, Kvadrat  
[fabric sample] Melange Nap 221, Kvadrat  
[fabric sample] Floyd 623, Kvadrat  
[fabric sample] Raas 462, Kvadrat  
[rug sample] Cocoon 0130, Kvadrat  
Tile Vieux rose octagone, Intercodam  
Tile Mercurio, Intercodam  
Tile Red brown matt, Intercodam  
Tape, Kamoi  
Teaspoon, Zara Home  
Round plate, private collection  
Pink glass, HAY  
Pink triangle, HAY  
[sample of table top] white 10, Ahrend  
[colour sample] 36 Dark Warm Grey, Ahrend  
[colour sample] 58 Antique Pink, Ahrend

### Page 14 – 25

#### A winning team

Yellow jacket (Stradivarius)  
Yellow raincoat (America Today)  
Checked jacket (Scotch & Soda)  
Coat stand Flower (Cascando)  
Pigeon by Christien Meindertsma (Kvadrat)  
Sneakers Stan Smith (Kvadrat x adidas Originals)  
PC Double Arm task lights, Rainbow and Wood mugs, ruler triangle, notebooks, work of art (HAY)  
Berlin bicycle (Veloretti)  
Open Weave curtain (Kvadrat)  
Moss rug (Kvadrat)

### Moodboard page 31

#### From left to right

[yarn sample] ring with Moss 0012, Kvadrat  
[colour sample] 39 Grey, Ahrend  
[colour sample] 63 Golden Yellow, Ahrend  
[colour sample] 91 Baby Blue, Ahrend  
[fabric sample] Melange Nap 951, Kvadrat  
[fabric sample] Fiord 521, Kvadrat  
[fabric sample] Remix 2 823, Kvadrat  
[fabric sample] Remix 2 433, Kvadrat  
[curtain sample] Open Weave 0012, Kvadrat  
[sample of table top] Linotop CH  
Charcoal, Ahrend  
Note block, HAY  
Toll, HAY

### Page 26 - 33

#### Let get to work!

PC Double Arm task lights, Time hourglass, laptop sleeve, Kaleido tray, vases, wooden hand (HAY)  
Intagande glass (Ikea)  
Bicycle (Veloretti)

### Moodboard page 31

#### From left to right

[fabric sample] Melange Nap 951, Kvadrat  
[fabric sample] San 950, Kvadrat  
[fabric sample] Revive 2, Kvadrat  
[fabric sample] Melange Nap 911, Kvadrat  
[fabric sample] Memory 2 953, Kvadrat  
Wooden Hand S, HAY  
[colour sample] 76 Grey Green, Ahrend  
[colour sample] 32 Grey Oak print, Ahrend  
Tile Blue Dots Gris, collection Pico, Mutina  
Black scissors, green Kaleido tray, HAY

### Page 38 – 45

#### Wait on me

Scarf (H&M)  
Jacket (Arket)  
Raincoat, bag (Zara)  
Merger rug by Hella Jongerius (Kvadrat)  
Coat stand Flower (Cascando)

### Moodboard page 43

#### From left to right

[fabric sample] Divina MD 813, Kvadrat  
[fabric sample] Remix 2 823, Kvadrat  
[sample of tabletop] Monotop 10 White, Ahrend  
[colour sample] 31 Sand, Ahrend  
[colour sample] 91 Baby Blue, Ahrend  
Pencils NO.4, HAY  
Tile MTL 05 Pirite, Intercodam  
Tile Gris Perle, Intercodam  
[fabric sample] Alloy by Maharam 016, Kvadrat  
[colour sample] 54 Beech White wash PD-Pebble Linotop, Ahrend  
Tile Winckelmans Cross, Intercodam

### Page 46 – 55

#### The place to be

Pyramid Table 02, Pyramid Bench 11, round table, salt and pepper grinder, Italian napkin holder, Italian sugar shaker, Rainbow plates (HAY)

### Moodboard page 52

#### From left to right

[colour sample] NCS 2005-Y20R, Albert-Bünde  
[colour sample] NCS 7005-Y20R, Albert-Bünde  
[colour sample] NCS 4500-N, Albert-Bünde

Tile Winckelmans, Intercodam  
Tile RVE, Intercodam  
Tile Mutina, Intercodam  
Tile Mutina, Intercodam  
Tiles Sicis, Intercodam  
[colour sample] 36 Dark Warm Grey, Ahrend  
[wood sample] 49 Walnut, Ahrend  
Viroc, Baars-Bloemhoff  
[fabric sample] Tonus 4 619, Kvadrat  
[fabric sample] Divina 3 886, Kvadrat  
[fabric sample] Tonica 2 831, Kvadrat  
Tile Winckelmans, Intercodam

### Page 56 – 65

#### Quality time

Soft Cells upholstered with Steelcut Trio, Reflector curtain, Argali rug by Hella Jongerius (Kvadrat)  
Gili vase (Studio Roderick Vos)  
Moroccan vase, colour Glass champagne glass, work of art, Tray Table, Paper Porcelain Coffee coffee cup and coffee saucer, Checked Out plaid, Eclectic cushions, Bella coffee table (HAY)  
Toio floor lamp (Flos)  
True Colour and Tricolore vases (&tradition)  
Sofa BR 12 by Martin Visser (Spectrum), upholstery: Melange Nap 951 (Kvadrat)  
Soccer ball (Smit-Cruyff Amsterdam)

### Moodboard page 62

#### From left to right

Vase, &tradition  
Perforated tray, Paper Porcelain coffee saucer, HAY  
[colour sample] 10 White, Ahrend  
Tile MOS-4033, Intercodam  
Tile Sicis, Intercodam  
[fabric sample] Tonus 4 619, Kvadrat  
[fabric sample] Melange Nap 911, Kvadrat  
Paper Porcelain espresso cup, HAY  
[curtain sample] Reflector 0014, Kvadrat  
[rug sample] Argali 971, Kvadrat



**Ahrend** is an international leader in office furniture, with a passion for creating inspiring working environments that bring out the best in people and their organisation. Products and interiors are designed to encourage wellbeing and productivity. Ahrend always finds the solution that best fits the needs, whether it involves workplaces, reception areas or meeting rooms.

## **kvadrat**

**Kvadrat** equals textile innovation. Since its foundation in 1968, the Danish company has been leading the field in textile design, producing high-quality contemporary textiles and textile-related products. Together with the world's most accomplished architects, designers and furniture manufacturers, Kvadrat brings warmth, tactility and colour into public buildings, offices, commercial interiors and homes.

